



FOR LEASE

NEW CONSTRUCTION FLEX CONDOS

10890 NW 17TH ST - SUITE 150-151
SWEETWATER, FL 33172



APEX
CAPITAL REALTY

ABOUT APEX CAPITAL REALTY

APEX Capital Realty is an independent commercial real estate brokerage firm. We work directly with a diverse number of real estate and business owners in order to create unique, fulfilling, and lucrative opportunities in the market.

APEX Capital Realty is composed of industry experts and specialists which possess an unparalleled understanding of the unique dynamics and trends that drive the current real estate and business markets. We believe in having a transformative impact in our industry through leadership and advocacy which helps push the creative boundary of what can be achieved. With collaboration ingrained in our company culture, our commercial advisors work hand-in-hand with our clients in order to reach optimal results.



ADVISORS

MARTIN BRAVO

COO / Partner
305 967 3615

Martin@apexcapitalrealty.com

ANDRES MARINO

Commerical Advisor
786 797 4138

Andres@apexcapitalrealty.com

OFFERING SUMMARY

10890 NW 17TH ST, SWEETWATER, FL 33172

Apex Capital Realty is proud to introduce two new construction industrial condos for Lease.

All units include two-room office space with air conditioning, a Bathroom, Modern lighting, a Glass storefront, and shared parking spaces. The units are perfect for storage and dispatch. Also perfect for vehicle storage. Ability to add vehicle lifts for car storage. 18+ foot ceilings.

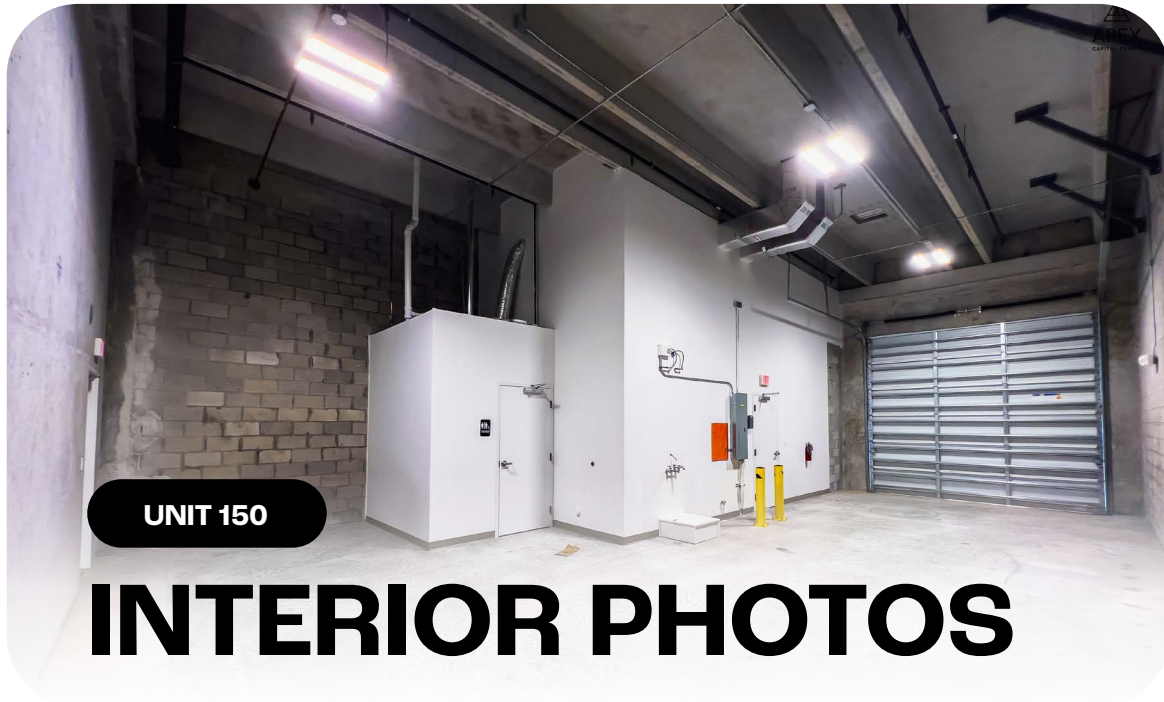
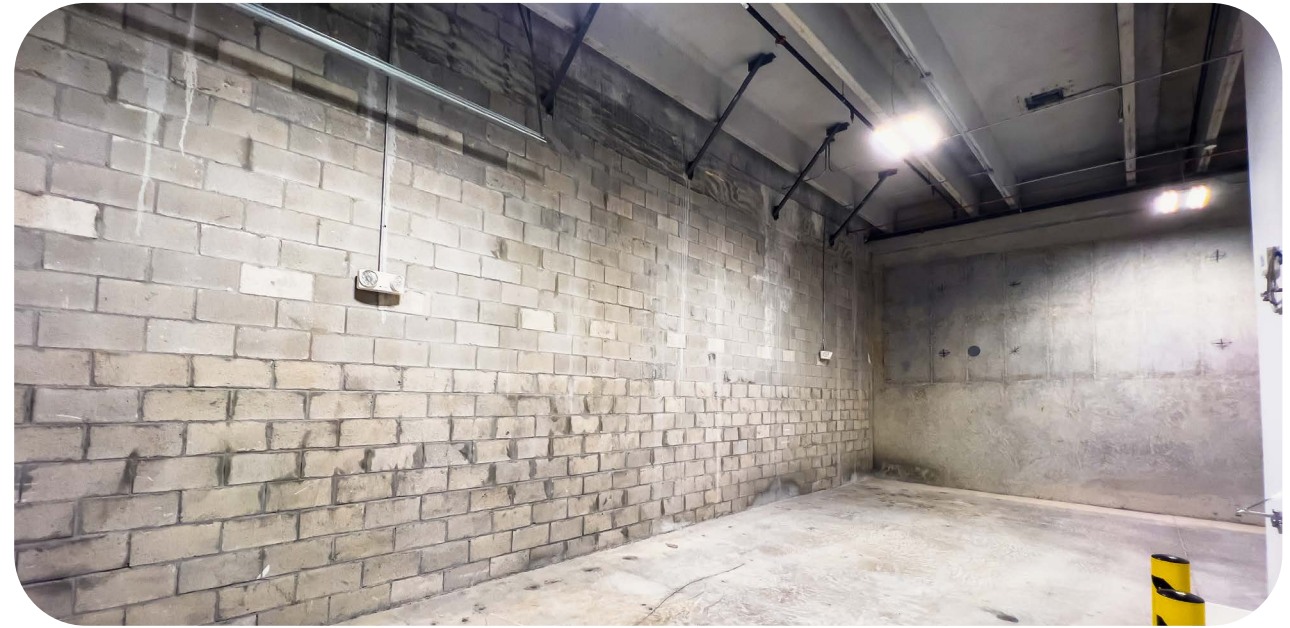
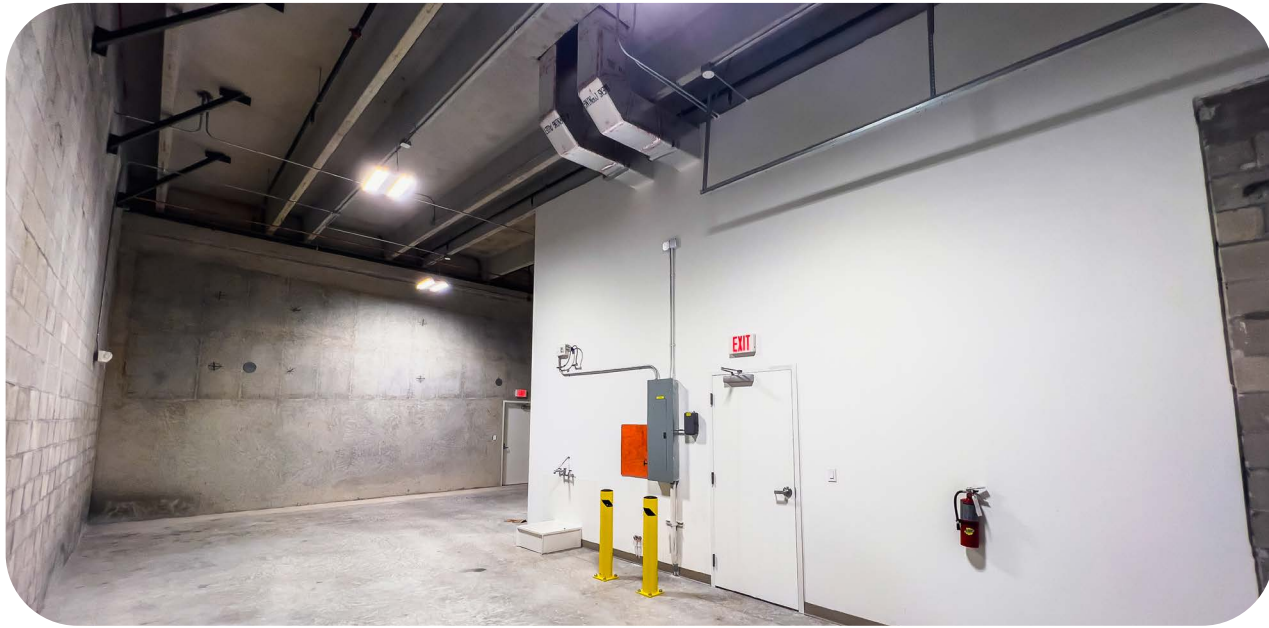
Fantastic location, next to Dolphin Mall and Miami International Mall. No Columns!



Unit 150	1,290 SF
Unit 151	1,290 SF
Ceiling Height	18"
Year Built	2022
Asking Price	\$36 PSF Modified Gross

HIGHLIGHTS

- Easy Access to Dolphin Expwy (836), Turnpike, & 826
- Minutes from Miami International Airport
- New Construction
- Oversized Drive In Door
- 250 SF Office Space w/ 1 Bathroom and Full A/C



UNIT 150

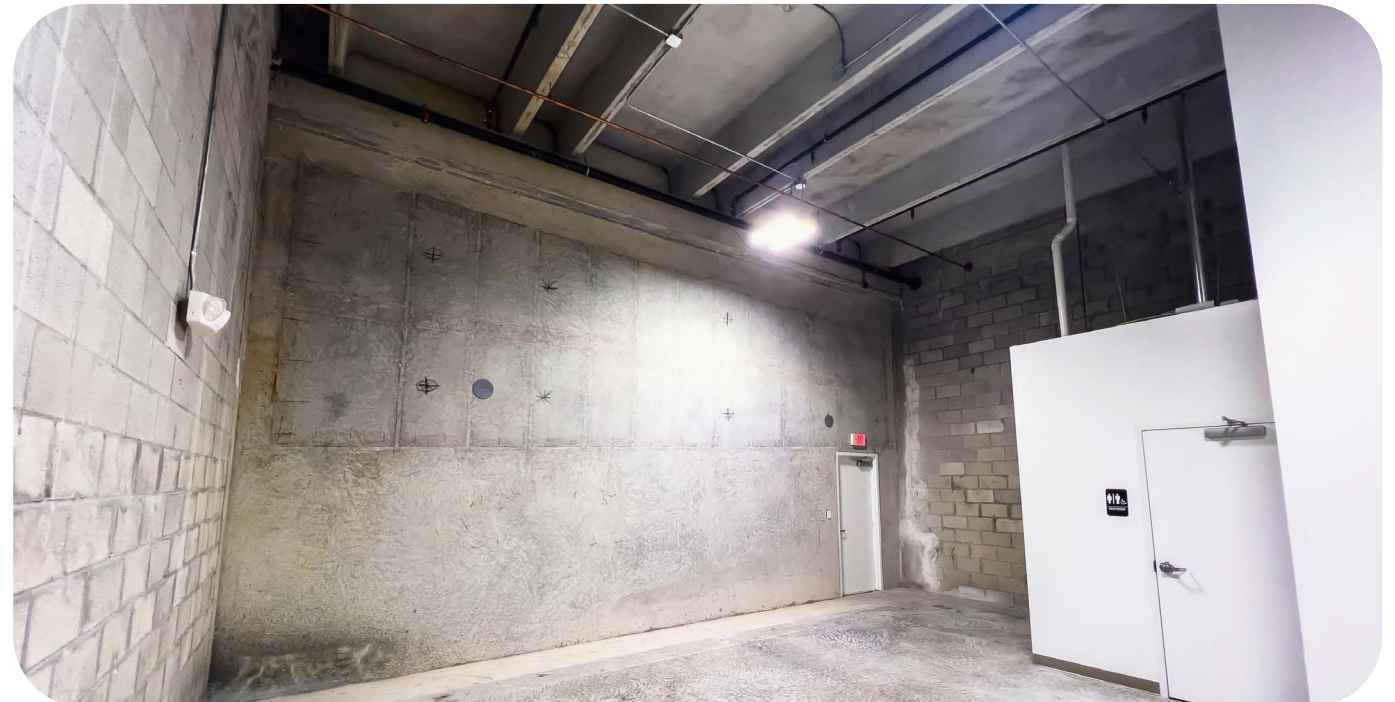
INTERIOR PHOTOS





INTERIOR PHOTOS



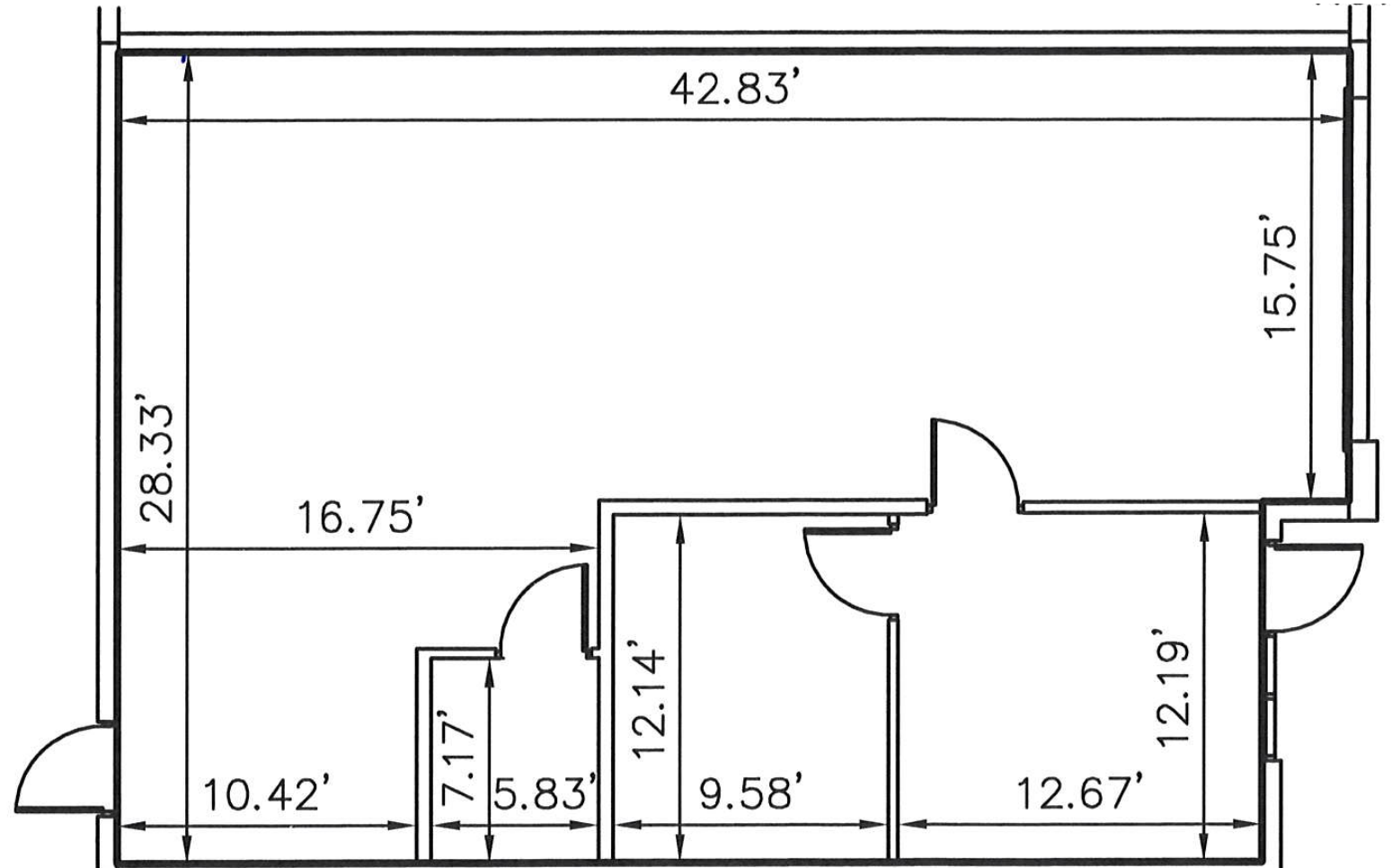




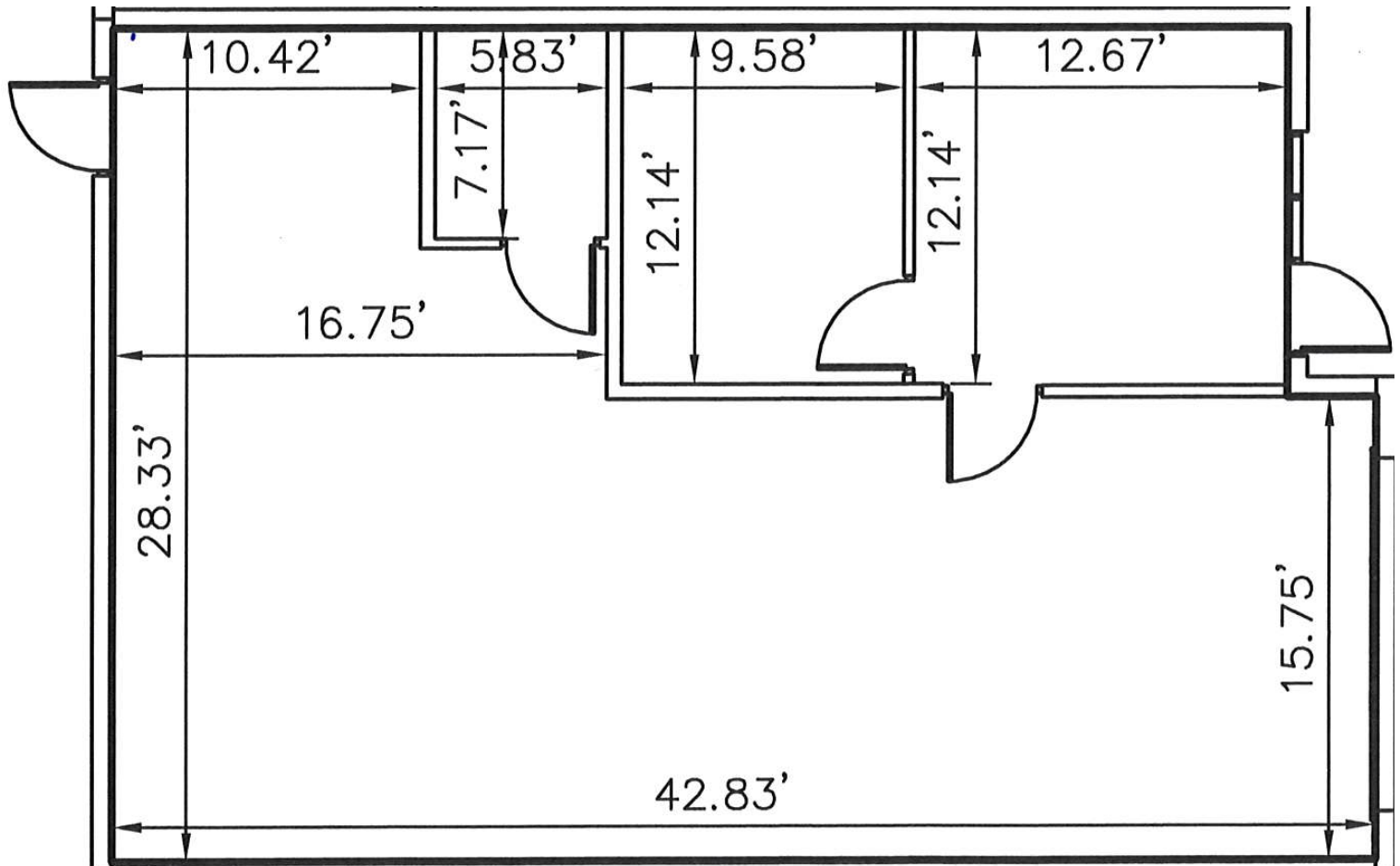
INTERIOR PHOTOS



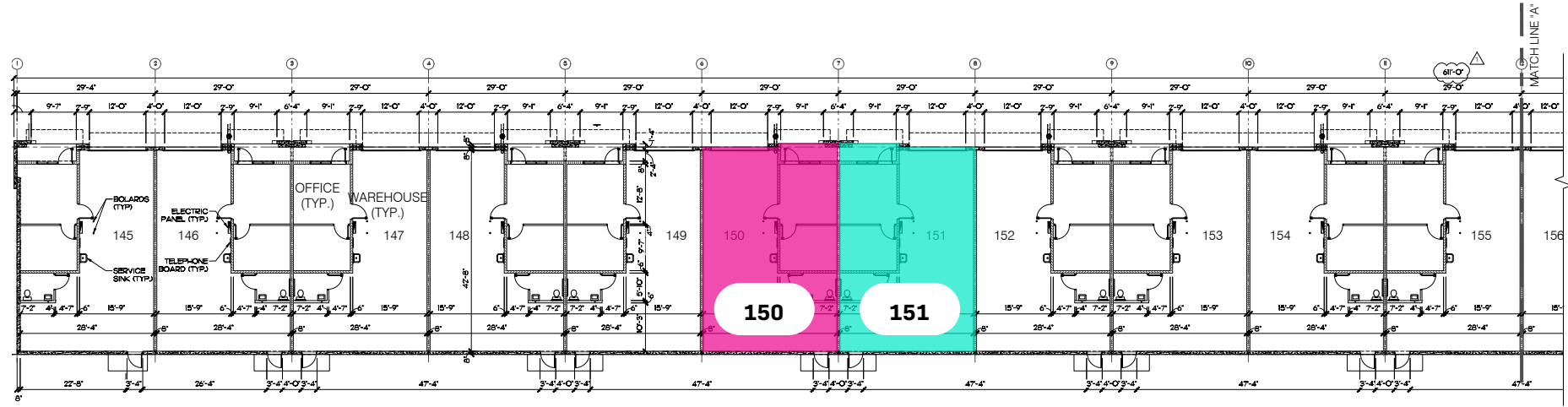
UNIT 150 FLOOR PLAN



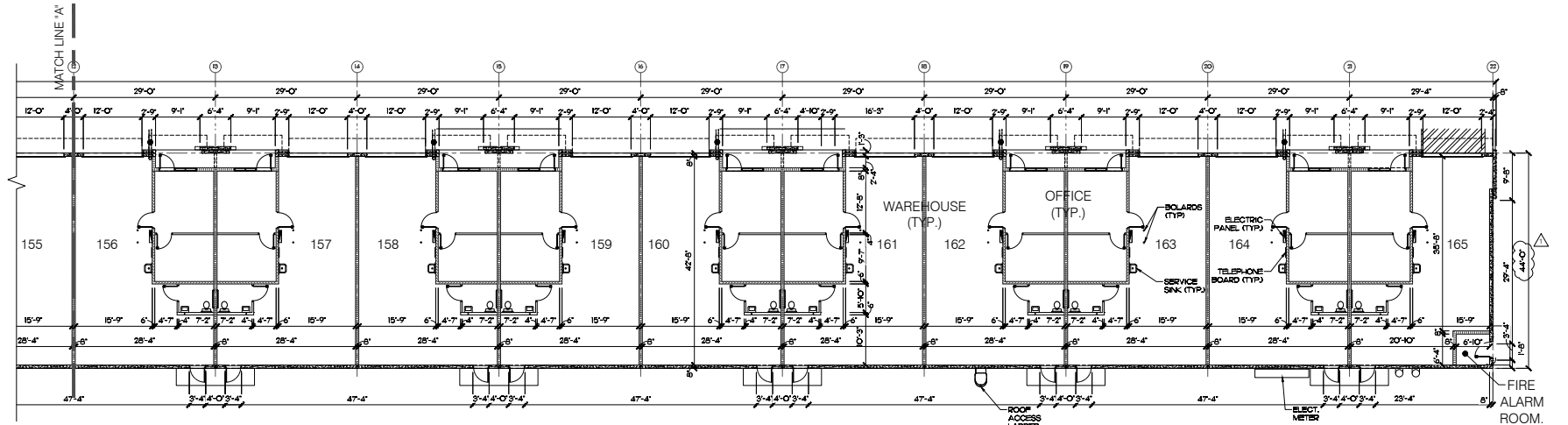
UNIT 151 FLOOR PLAN



BUILDING FLOOR PLAN

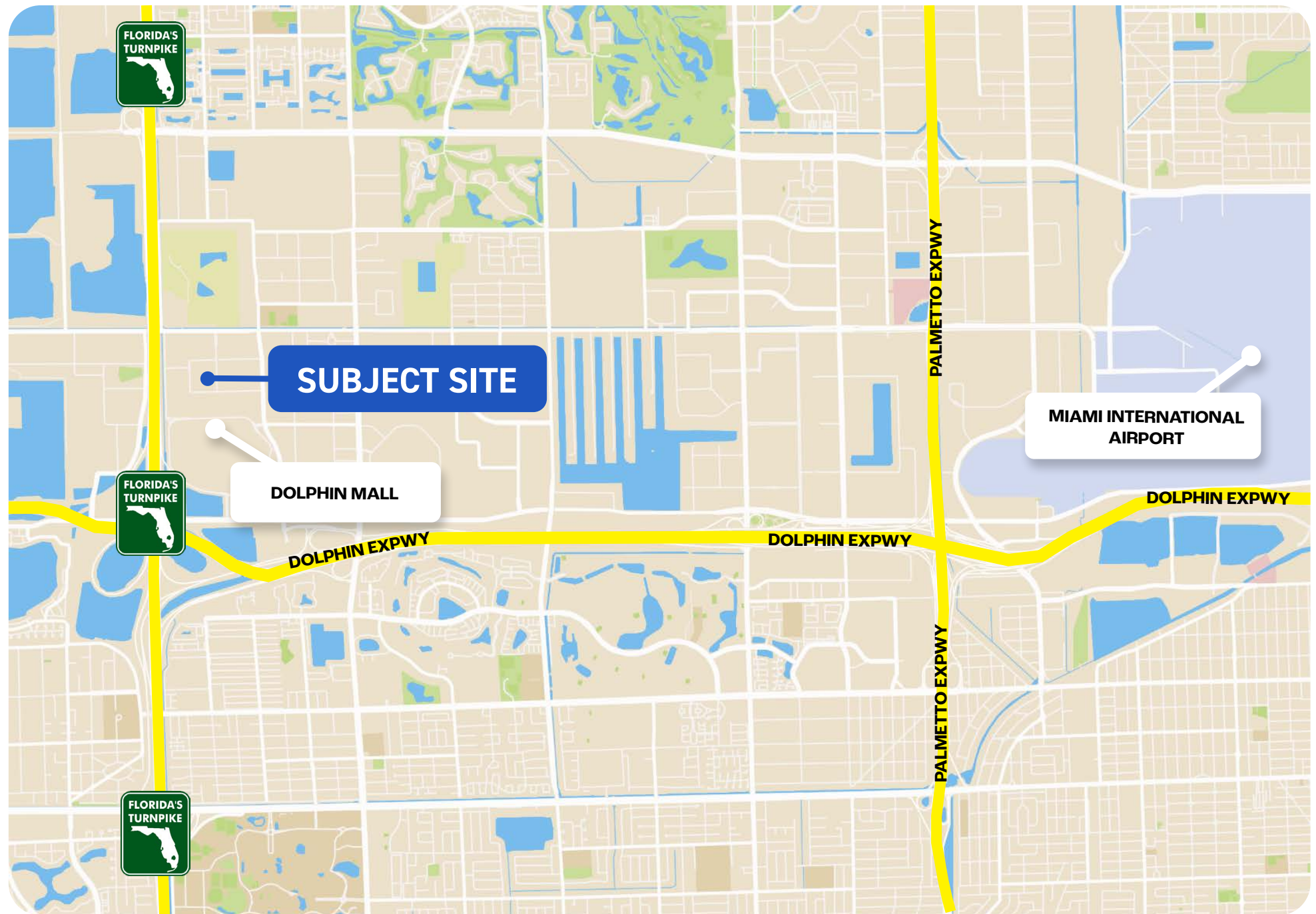


FLOOR PLAN BUILDING 2 PORTION "A"
SCALE: 3/32" = 1'-0"



FLOOR PLAN BUILDING 2 PORTION "B"
SCALE: 3/32" = 1'-0"

RETAIL MAP





APEX
CAPITAL REALTY

MARTIN BRAVO

COO / Partner

305 967 3615

Martin@apexcapitalrealty.com

ANDRES MARINO

Commerical Advisor

786 797 4138

Andres@apexcapitalrealty.com

561 NE 79 ST, Suite 420

Miami FL 33138

305 570 2600

www.apexcapitalrealty.com