

DOLPHIN CITICENTER INDUSTRIAL CONDOS

10890 NW 17TH ST

MIAMI, FL 33172



APEX
CAPITAL REALTY

MARTIN BRAVO
COO / PARTNER
305 967 3615
MARTIN@APEXCAPITALREALTY.COM

ERIKA GOLDMAN
COMMERCIAL ADVISOR
305 904 3348
ERIKA@APEXCAPITALREALTY.COM

APEX CAPITAL REALTY
305 570 2600
561 NE 79 ST SUITE 420,
MIAMI, FL 33138
APEXCAPITALREALTY.COM

OFFERING SUMMARY



BUILDING HIGHLIGHTS

- Easy Highway Access to Dolphin Expressway (836), Turnpike, and 826
- Minutes from Miami International Airport
- New Construction
- Oversized Drive In Door
- 250 SF Office Space Included With 1 Bathroom and Full A/C

Unit 150:	1,290 SF
Unit 151:	1,290 SF
Ceiling Height:	18"
Zoning	IU-1
Year Built:	2022
Asking Price:	\$25 PSF NNN

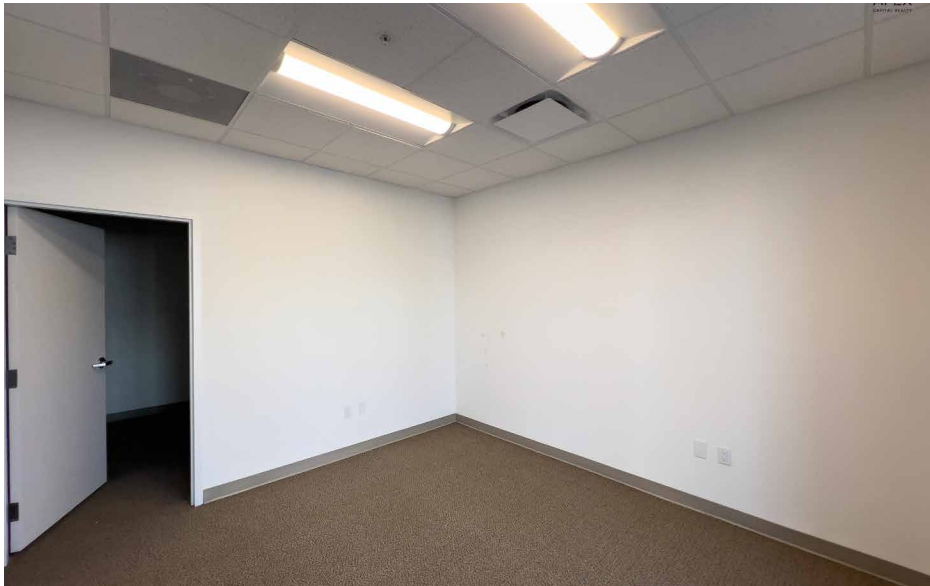
Apex Capital Realty is proud to introduce two new construction industrial condos for Lease. All units include two-room office space with air conditioning, a Bathroom, Modern lighting, a Glass storefront, and shared parking spaces. Units are perfect for storage and dispatch. Also perfect for vehicle storage. Ability to add vehicle lifts for car storage. 18+ foot ceilings.

Fantastic location, next to Dolphin Mall and Miami International Mall.

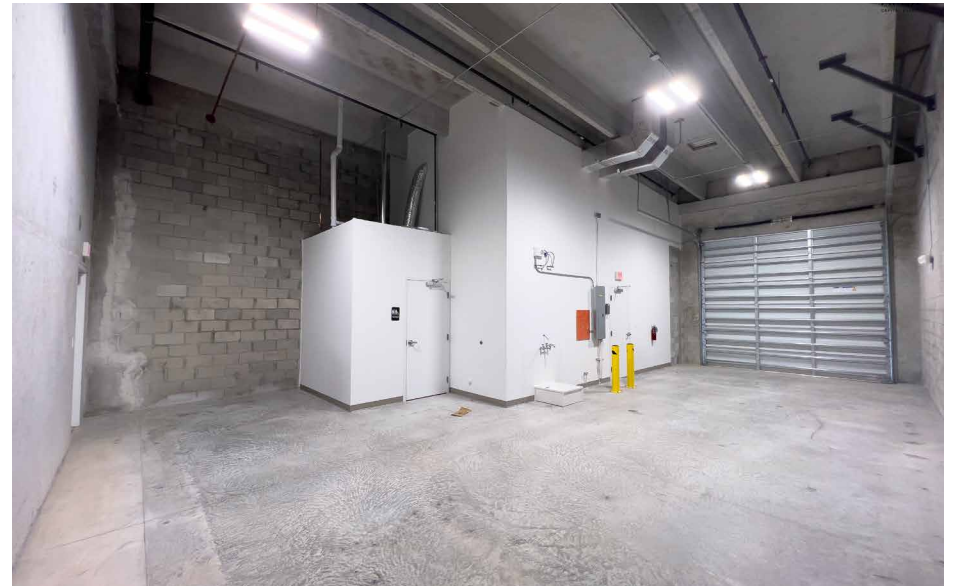
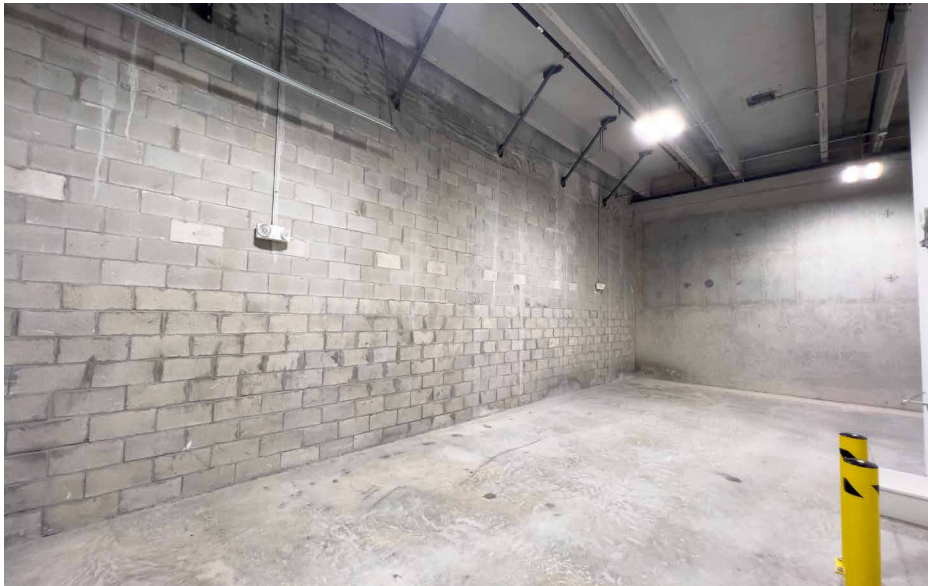
No Columns!



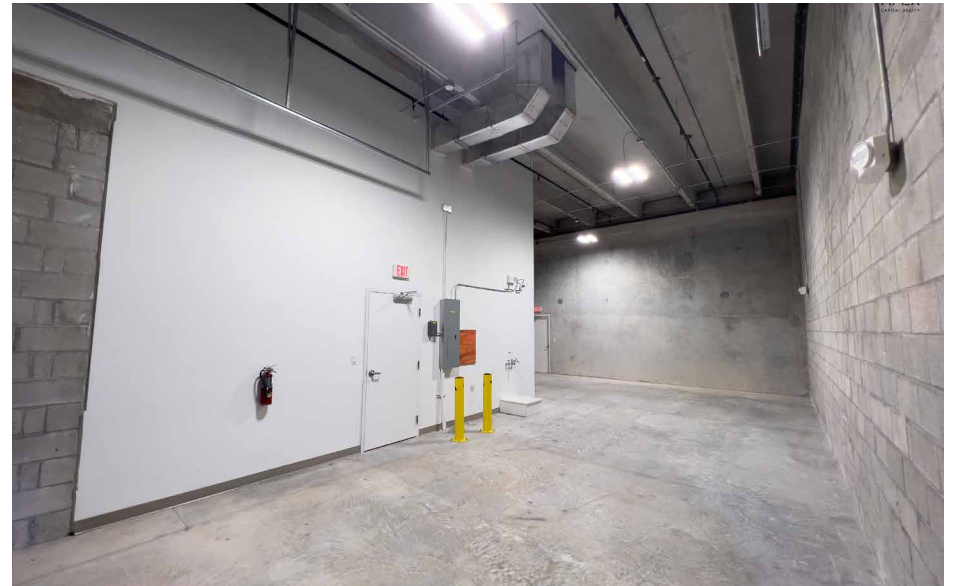
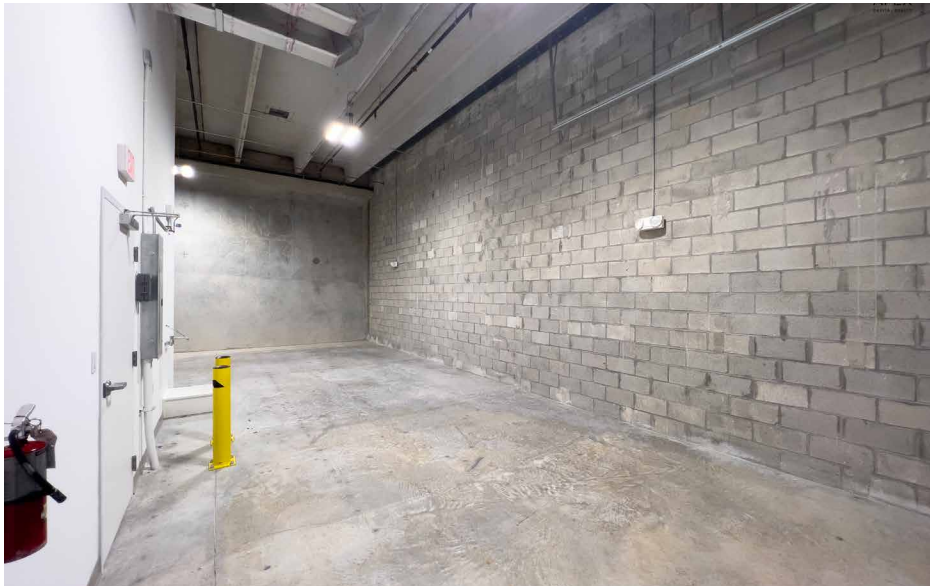
UNIT 150 - PHOTOS



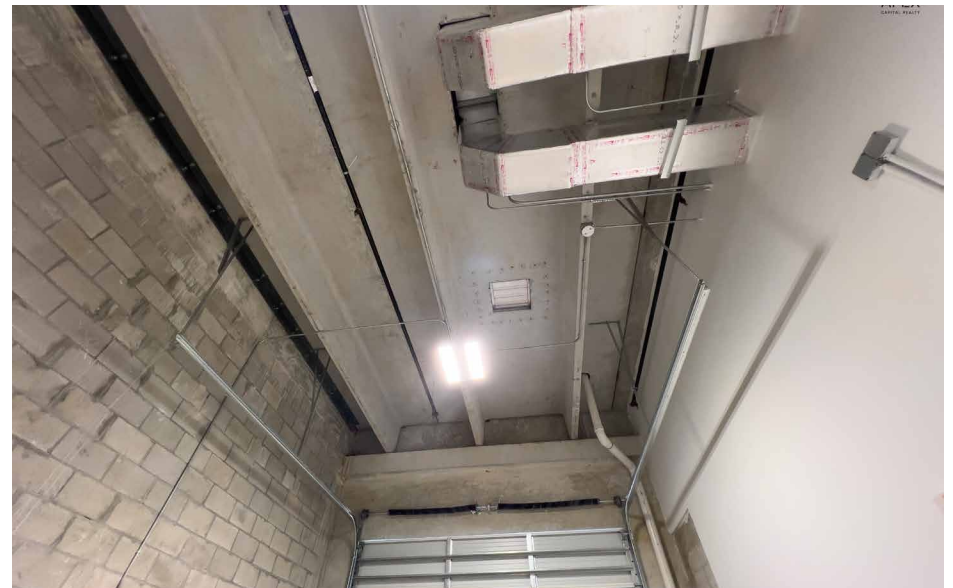
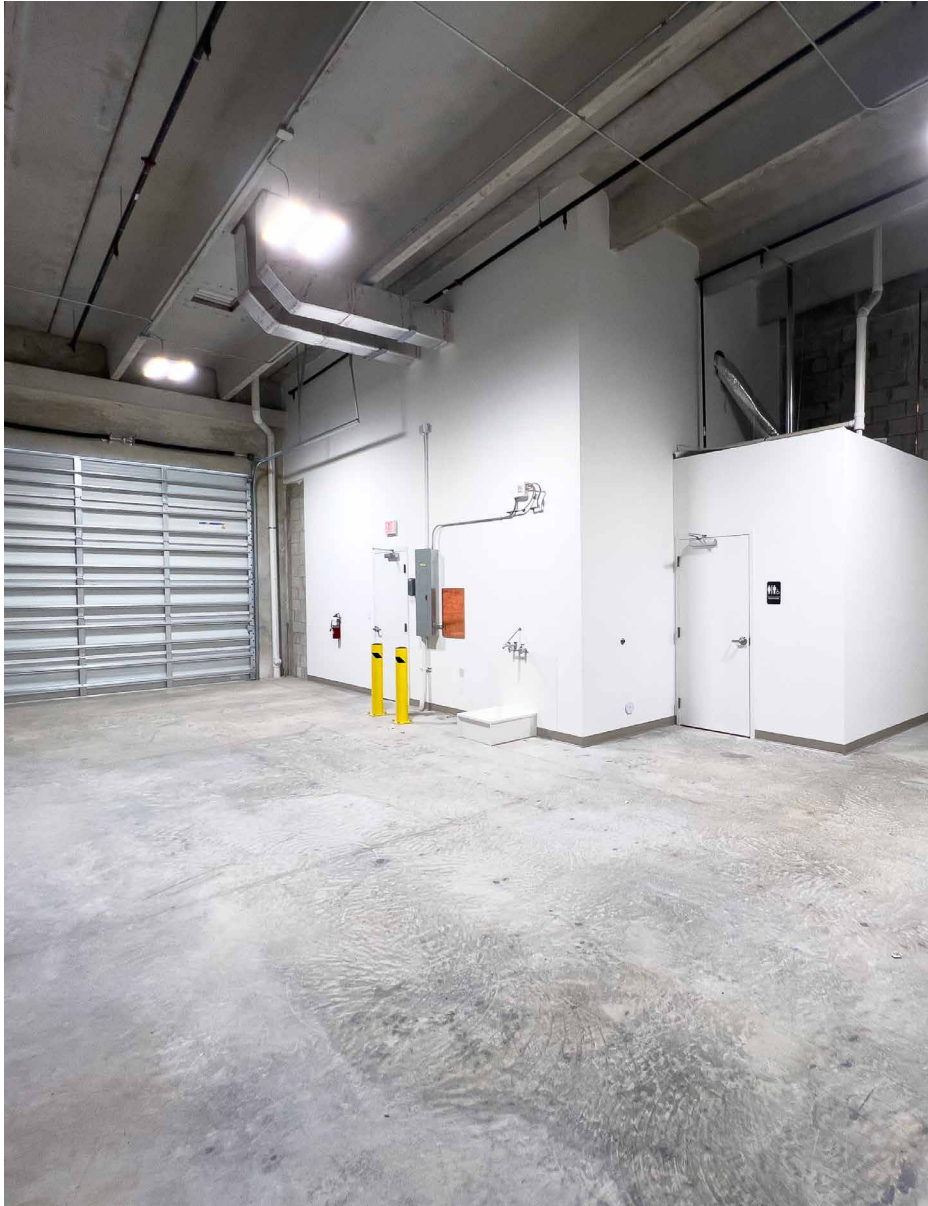
UNIT 150 - PHOTOS



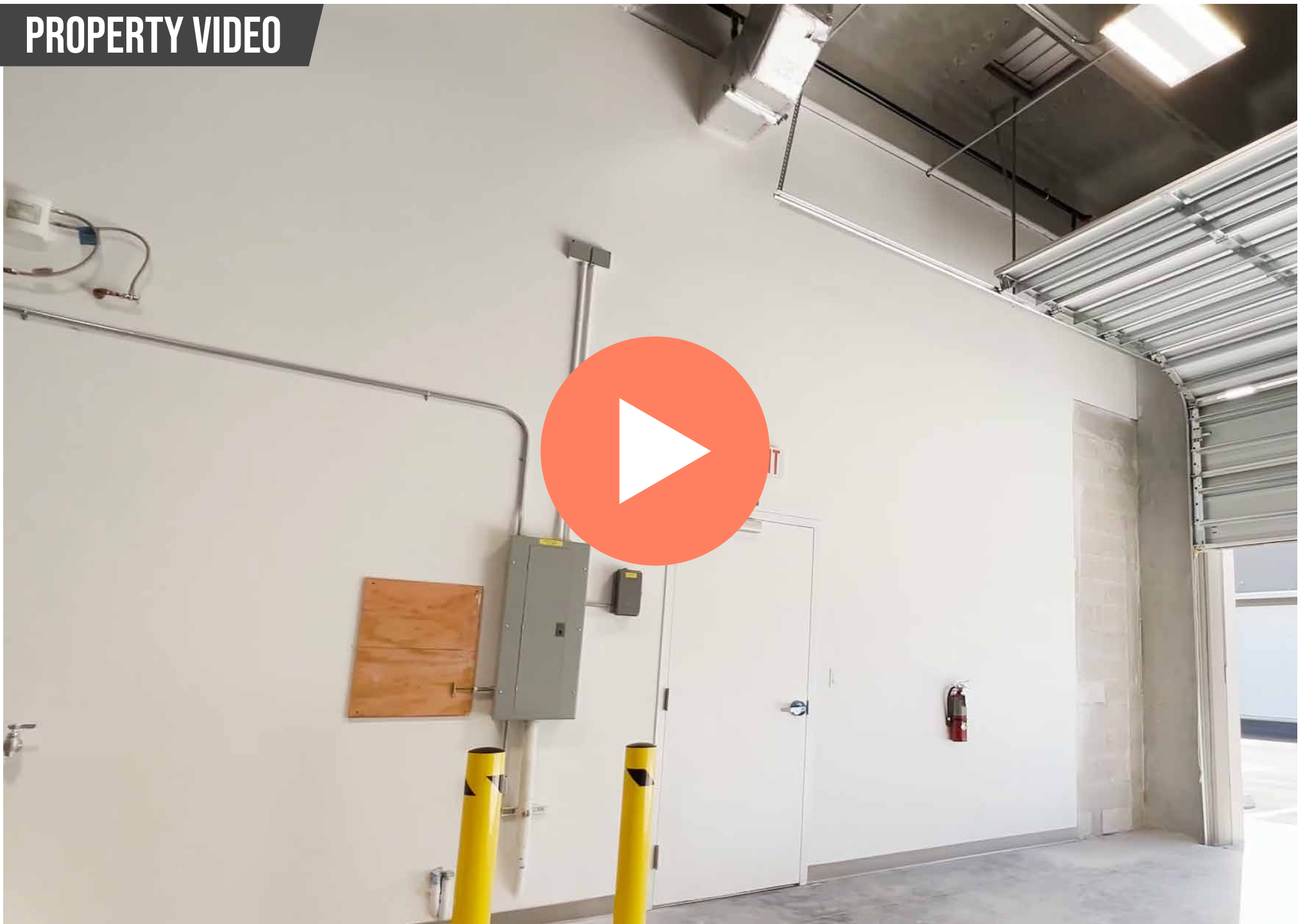
UNIT 151 - PHOTOS



UNIT 151 - PHOTOS



PROPERTY VIDEO

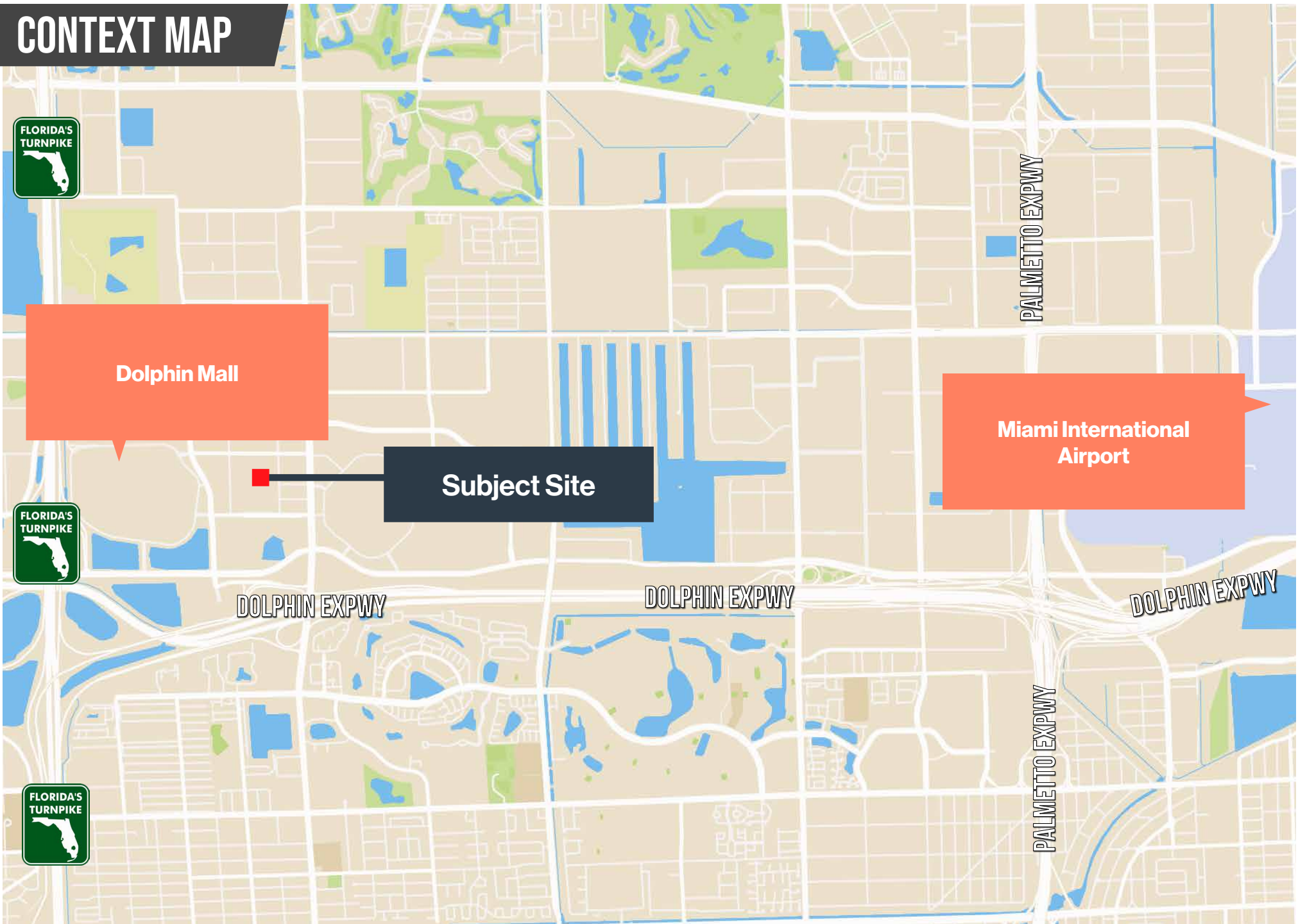


This information has been obtained from sources believed reliable. We have not verified it and make no guarantee, warranty or representation about it. ©2021-2022 APEX CAPITAL REALTY LLC.



MARTIN BRAVO | COO/PARTNER | 305 967 3615
ERIKA GOLDMAN | COMMERCIAL ADVISOR | 305 904 3348

CONTEXT MAP



Dolphin Mall

Subject Site

Miami International Airport

DOLPHIN EXPWY

DOLPHIN EXPWY

DOLPHIN EXPWY

PALMETTO EXPWY

PALMETTO EXPWY





APEX
CAPITAL REALTY

APEX CAPITAL REALTY
305 570 2600
561 NE 79 ST SUITE 420,
MIAMI, FL 33138
APEXCAPITALREALTY.COM

MARTIN BRAVO
COO / PARTNER
305 967 3615
MARTIN@APEXCAPITALREALTY.COM

ERIKA GOLDMAN
COMMERCIAL ADVISOR
305 904 3348
ERIKA@APEXCAPITALREALTY.COM