

**1501 34<sup>TH</sup> ST SOUTH**  
**ST PETERSBURG, FL 33711**

**BP GAS STATION FOR SALE**



**DANILO AQUINO**  
COMMERCIAL ADVISOR  
**786 201 3020**  
DANILO@APEXCAPITALREALTY.COM



**APEX**  
CAPITAL REALTY

901 NE 79 ST | MIAMI, FL 33138  
305 570 2600  
[APEXCAPITALREALTY.COM](http://APEXCAPITALREALTY.COM)

# OFFERING SUMMARY



## PROPERTY OVERVIEW

Type:	Convenience Store - Gas Station
Building Size:	2,114 SF
Lot Size:	18,174 SF
Zoning:	Convenience Store
Traffic Count:	40,000
Asking Price:	\$1,200,000

## PROPERTY HIGHLIGHTS

- Landmark Corner Gas Station
- Three Pumps with Double Walled Tanks (replaced less than 5 yrs ago)
- Over 40,000 in vehicular traffic on busy 34 Street South
- Excellent Signage Opportunity
- Owner Operator Opportunity

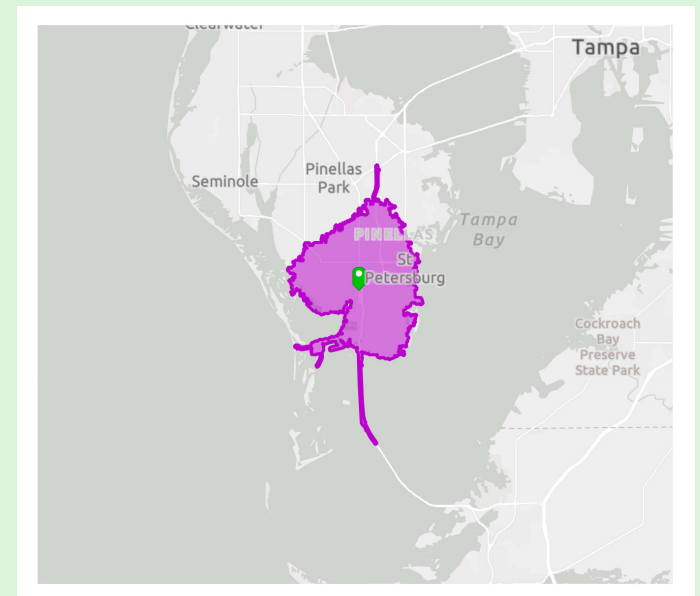
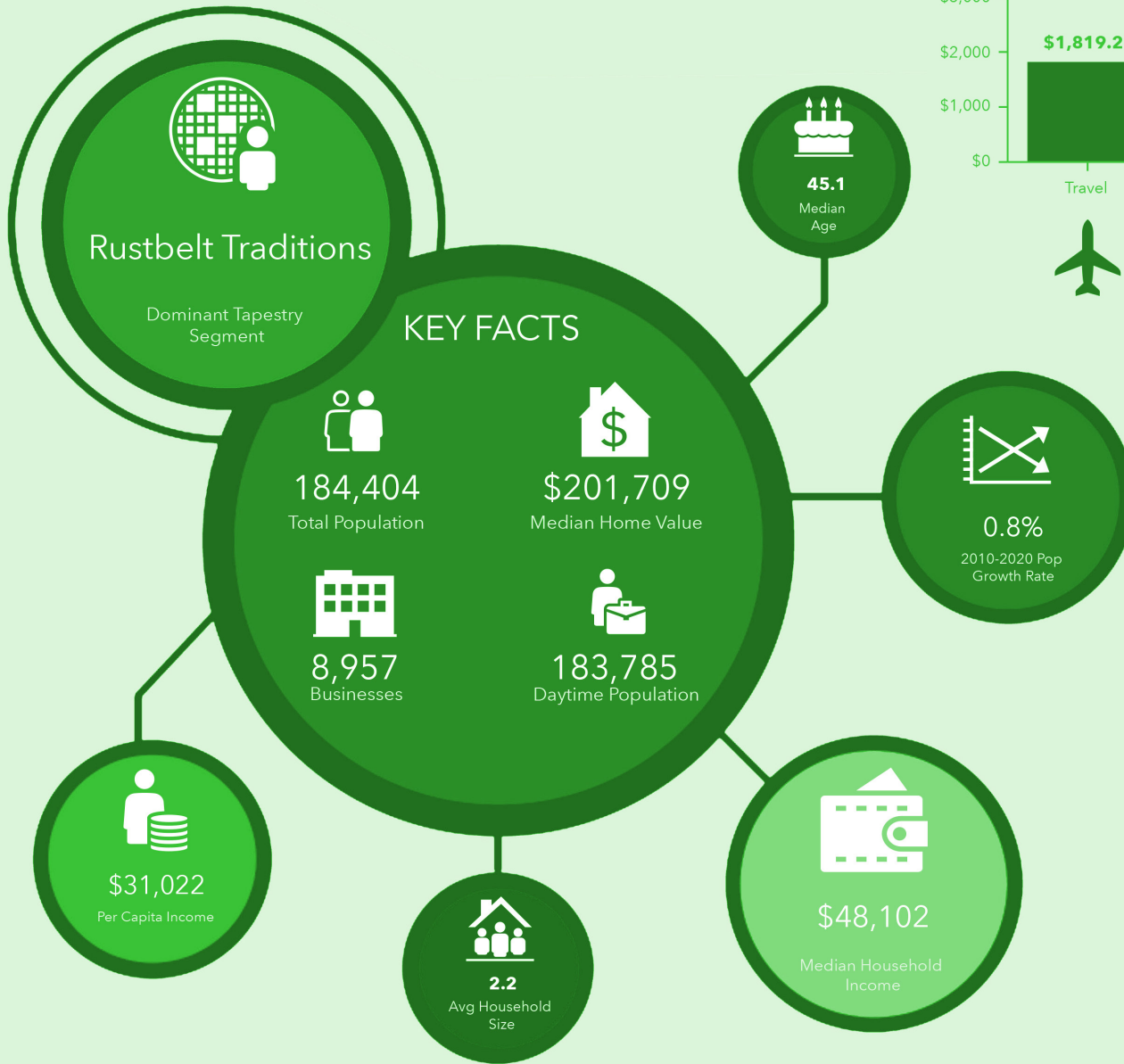
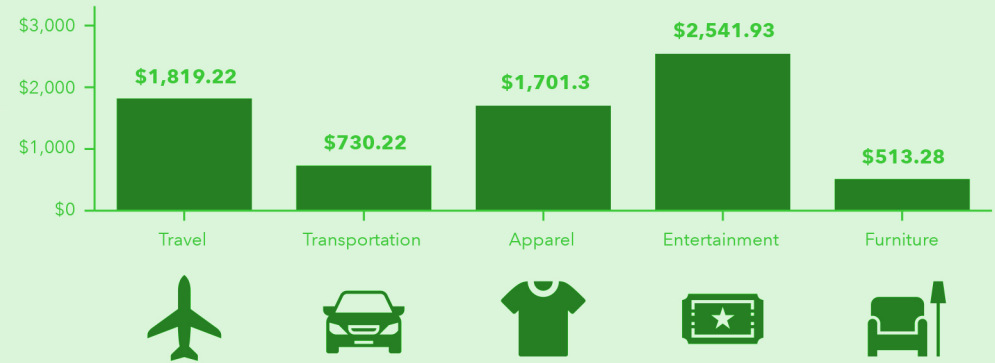
Apex Capital Realty is proud to exclusively represent an opportunity to own a BP Gas Station in the growing area of Pinellas County in St Petersburg, Florida. This renovated BP Gas Station is centrally located on the corner of 15 Street South and the heavily trafficked 34 Street South. Located just a short distance from Marina Harbour, Gibbs High School, Tropicana Field and with easy access to I-275. This is an excellent opportunity for an owner operator that wants a well performing gas station in the 5th largest city in FL - St Petersburg.

The Convenience Store/Mart is 2,114 SF and sits on a 12,100 SF lot. The current owner leases to operator- store sales are estimated at \$75,000 monthly and over 40,000 gallons per month in consumption. The property has been well maintained and the Double Walled Tanks have been replaced less than 5 year ago. Store comes with an ATM on site, Florida Lottery, Beer & Wine License, Vacuum/AIR etc.



# SPENDING FACTS

## KEY SPENDING FACTS



# KEY FACTS



## KEY FACTS

184,404

Population

45.1

Median Age

2.2

Average Household Size

\$48,102

Median Household Income

## INCOME



\$48,102

Median Household Income



\$31,022

Per Capita Income



\$47,357

Median Net Worth



# AERIAL VIEW



DOUGLAS L JAMERSON ELEMENTARY SCHOOL

COMMERCIAL VEHICLE DRIVING

metroPCS

GIBBS HIGH SCHOOL



LOOKING GOOD

CAMPBELL MERCEDES REPAIR

TAMPA BAY AUTO

KINGDOM AUTO SALON

KINGS MEAT MARKET



1501 34<sup>TH</sup> ST SOUTH

CUSTOM SOUNDS

15 AVE S

AAA AUTO CARE

34 STS

SUNDAZE

URBAN SPECIALTY PHARMACY

DRIFTWOOD



SALEM'S FRESH EATS



**LOCATION MAP**

**TREASURE ISLAND**

**TROPICANA BASEBALL FIELD**

**PINELLAS TECHNICAL COLLEGE**

**GIBBS HIGH SCHOOL**

**1501 34<sup>th</sup> ST SOUTH**

**TWIN BROOKS GOLF COURSE**

**CLAM BAYOU PARK/NATURE PRESERVE**

**ST PETE BEACH**

**MARINA HARBOR**





# APEX

CAPITAL REALTY

---

305 570 2600

901 NE 79 ST  
MIAMI, FL 33138

[WWW.APEXCAPITALREALTY.COM](http://WWW.APEXCAPITALREALTY.COM)

---

**DANILO AQUINO**

COMMERCIAL ADVISOR

786 201 3020

[DANILO@APEXCAPITALREALTY.COM](mailto:DANILO@APEXCAPITALREALTY.COM)